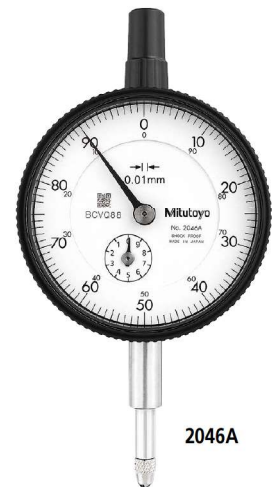




SERIES 2 — Standard Type, 0.01 mm Graduation

- This model is the most popular Mitutoyo indicator with excellent accuracy and durability. Standard 0.01 mm graduation dial indicators have a bezel with an outside diameter of 57 mm.
- The indicator is highly durable thanks to its oil- and water-tight design, quenched hardened stainless-steel, carbide contact point, and a grand gear made of wear- and deformation-resistant material.
- Application of an anti-reflective and hard surface coating improves scale visibility along with scratch and chemical resistance.



2046A

SPECIFICATIONS

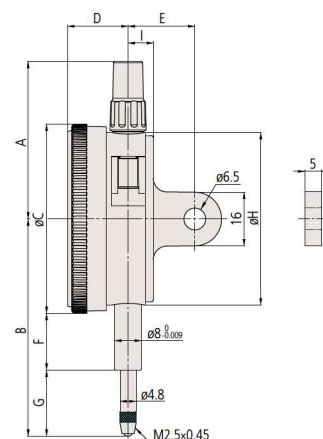
Metric		ISO/JIS type									
Code No.		Graduation (mm)	Range (range/rev) (mm)	Maximum permissible error (MPE) (μm)						Dial reading	Measuring force (N)
w/lug	Flat-back			Indication error				Hysteresis	Repeat-ability		
				1/10 Rev	1/2 Rev	1 Rev	Measuring range				
2046A	2046AB	0.01	10 (1)	5	9	10	13	3	3	±0-100	1.4 or less
2046A-09	2046AB-09	0.01	10 (1)	5	9	10	15	3	3	±0-100	1.4 or less
2047A	2047AB	0.01	10 (1)	5	9	10	13	3	3	0-50-0	1.4 or less
2902A	2902AB	0.01	10 (1)	5	9	10	13	3	3	100-0	1.4 or less
2310A-10	2310AB-10	0.01	10 (1)	5	9	10	15	3	3	±0-100	1.4 or less
2044A	2044AB	0.01	5 (1)	5	9	10	12	3	3	±0-100	1.4 or less
2044A-09	2044AB-09	0.01	5 (1)	5	9	10	12	3	3	±0-100	1.4 or less
2045A	2045AB	0.01	5 (1)	5	9	10	12	3	3	0-50-0	1.4 or less

Note: Completed products inspection is performed in the vertical orientation (contact point downward) and the stated accuracy is guaranteed.

DIMENSIONS

ISO/JIS Type

Unit: mm

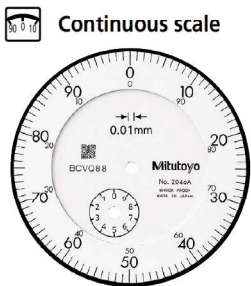


Code No.	A	B	C	D	E	F	G	H	I	Mass (g)	
										w/lug	Flat-back
2046A	47.2	65.2	57	18.1	20	16.9	19.8	52	7.6	144	135
2046A-09	47.2	65.2	57	18.1	20	16.9	19.8	52	7.6	146	137
2047A	47.2	65.2	57	18.1	20	16.9	19.8	52	7.6	144	135
2902A	47.2	65.2	57	18.1	20	16.9	19.8	52	7.6	144	135
2310A-10	47.2	65.2	57	18.1	20	16.9	19.8	52	7.6	146	137
2044A	47.2	65.2	57	18.1	20	16.9	19.8	52	7.6	145	136
2044A-09	47.2	65.2	57	18.1	20	16.9	19.8	52	7.6	147	138
2045A	47.2	65.2	57	18.1	20	16.9	19.8	52	7.6	145	136

Note: Refer to pages 07-63 to 07-68 for details of contact points.

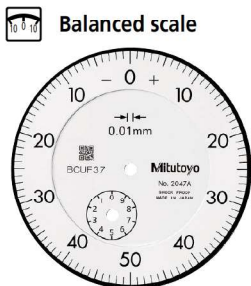
Dial Indicators

SERIES 2 — Standard Type, 0.01 mm Graduation



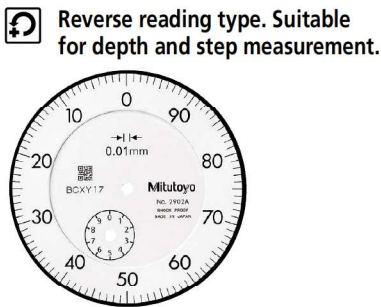
Graduation: 0.01 mm,
Measuring range: 10 mm

2046A
With damper at top rest point
2046A-09
Shockproof



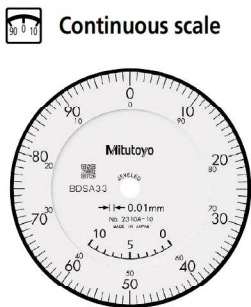
Graduation: 0.01 mm,
Measuring range: 10 mm

2047A
With damper at top rest point



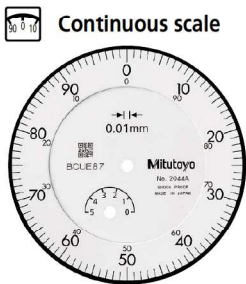
Graduation: 0.01 mm,
Measuring range: 10 mm

2902A
With damper at top rest point



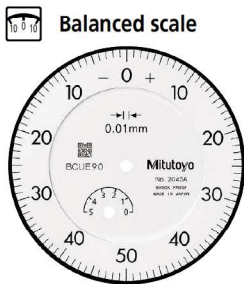
Graduation: 0.01 mm,
Measuring range: 10 mm

2310A-10
With coaxial revolution counter
Jeweled bearing



Graduation: 0.01 mm,
Measuring range: 5 mm

2044A
With damper at top rest point
2044A-09
With damper at top rest point
Shockproof



Graduation: 0.01 mm,
Measuring range: 5 mm

2045A
With damper at top rest point

Optional Accessories

- Limit hand (2 pcs.): **21AZB195**



- Bezel clamp: **21AZB148**



FEATURES

Metric		ISO/JIS type							
Code No.		50 0 10	10 0 10	60	64	68	72	76	80
w/lug	Flat-back								
2046A	2046AB	✓					✓		
2046A-09	2046AB-09	✓			✓				
2047A	2047AB		✓				✓		
2902A	2902AB			✓			✓		
2310A-10	2310AB-10	✓					✓	✓	✓
2044A	2044AB	✓					✓		
2044A-09	2044AB-09	✓			✓				
2045A	2045AB		✓				✓		